



Rabbit anti MAPKK5 (MEK5) Polyclonal Antibody

Alternative Name(s): MAPKK5; Mitogen-activated protein kinase kinase 5

Order Information

- **Description:** MEK5 (MAPKK5)
- **Catalogue:** 620-320
- **Lot:** See label
- **Size:** 100ug/200ul
- **Host:** Rabbit
- **Clone:** nan
- **Application:** IHC(P), WB
- **Reactivity:** Hu, Ms, Rt

ANTIGEN PREPARATION

A synthetic peptide corresponding to C-term of human MEK5. This sequence is identical among human, rat, mouse, chicken, and dog.

BACKGROUND

The MEK5 (also known as MKK5, MAPKK5, SKK5) is a dual specificity serine/threonine protein kinase belonging to the MAP kinase kinase family. It catalyzes tyrosine phosphorylation of ERK5 whereas MEK5 itself is regulated by MEKK3. An important link between MEK5 and metastatic prostate cancer has been demonstrated. Dual phosphorylation of Ser311 and Thr315 have been implicated in cell proliferation.

PURIFICATION

The Rabbit IgG is purified by Epitope Affinity Purification

FORMULATION

This affinity purified antibody is supplied in sterile Phosphatebuffered saline (pH7.2) containing antibody stabilizer

SPECIFICITY

This antibody recognizes ~49 kDa of human MEK5 protein. This antibody reacts with mouse and rat, chicken. The other species are not tested.

STORAGE

The antibodies are stable for 24 months from date of receipt when stored at -20oC to -70oC. The antibodies can be stored at 2oC-8oC for three month without detectable loss of activity. Avoid repeated freezing-thawing cycles.

APPLICATIONS/SUGGESTED WORKING DILUTIONS*

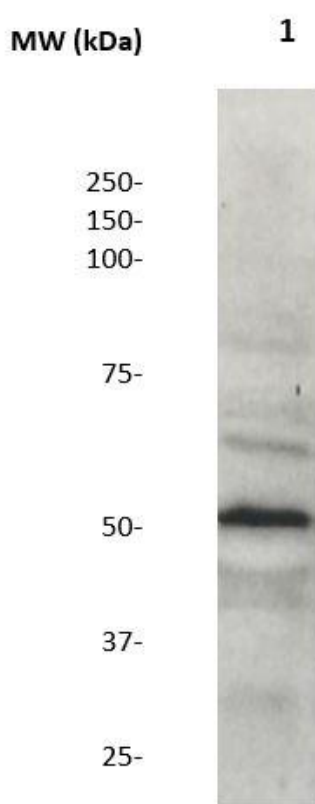
- Western Blot: 0.1-1 µg/ml
- ELISA: 0.01-0.1 µg/ml
- Immunoprecipitation: 2-5 µg/ml
- IHC: 2-10 µg/ml
- Flow cytometry: Not tested
- Molecular Weight: 49.0
- Positive Control: Kidney Tissue
- Cellular Location: Cell Membrane

*Optimal dilutions should be determined by researchers for the specific applications.

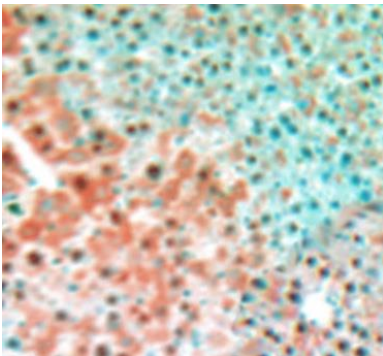
FOR RESEARCH USE ONLY.

AbboMax, Inc 2528 Qume Drive, Suite 8, San Jose, California 95131, USA
1 408-573-1898 (Tel). 1 408-573-1858 (Fax). www.abbomax.com info@abbomax.com

DATA ATTACHMENTS



Western Blot: The whole tissue lysates derived from mouse liver were immunoblotted by Rabbit anti-MEK5 (Cat#620-320) at 1:1000. Observed a major immunoreactive band at molecular weight ~49kDa.



Immunohistochemistry: Human liver carcinoma (FFPE) stained with Rabbit anti MEK5 antibody (Cat# 620-320) at 1:200 for 10 min @ RT. Staining of formalin-fixed tissue requires boiling tissue sections in 10 mM Citrate Buffer, pH 6.0 for 10 min followed by cooling at RT for 20 min.

REFERENCES

FOR RESEARCH USE ONLY.